



**CONSTRUCTION ALERT**  
**April 21, 2016**

**CONTACT:** Tommy Williamson  
(817) 914-0543  
[twilliamson@ferrovial.us](mailto:twilliamson@ferrovial.us)

**CONTINUOUS, SHORT-TERM CLOSURE OF ALL LANES OF MEACHAM BOULEVARD  
BEGINS TOMORROW, APRIL 22 AT 9 PM**

**FORT WORTH, Texas** – Beginning **9 p.m. Friday, April 22**, drivers can expect the following closure:

- All eastbound and westbound lanes of Meacham Boulevard at I-35W will be closed.
  - Eastbound traffic will be redirected to 28th Street.
  - Westbound traffic will be redirected to Mark IV Parkway.
  - This will be a continuous closure ending **5 a.m. Monday, April 25**.

This closure is for a demolition of the I-35W bridges over Meacham Boulevard.

For the latest closure information, follow North Tarrant Express on Twitter [@NTExpress](https://twitter.com/NTExpress) and on Facebook, [facebook.com/northtarrantexpress](https://facebook.com/northtarrantexpress), and sign up for e-alerts at [www.northtarrantexpress.com](http://www.northtarrantexpress.com).

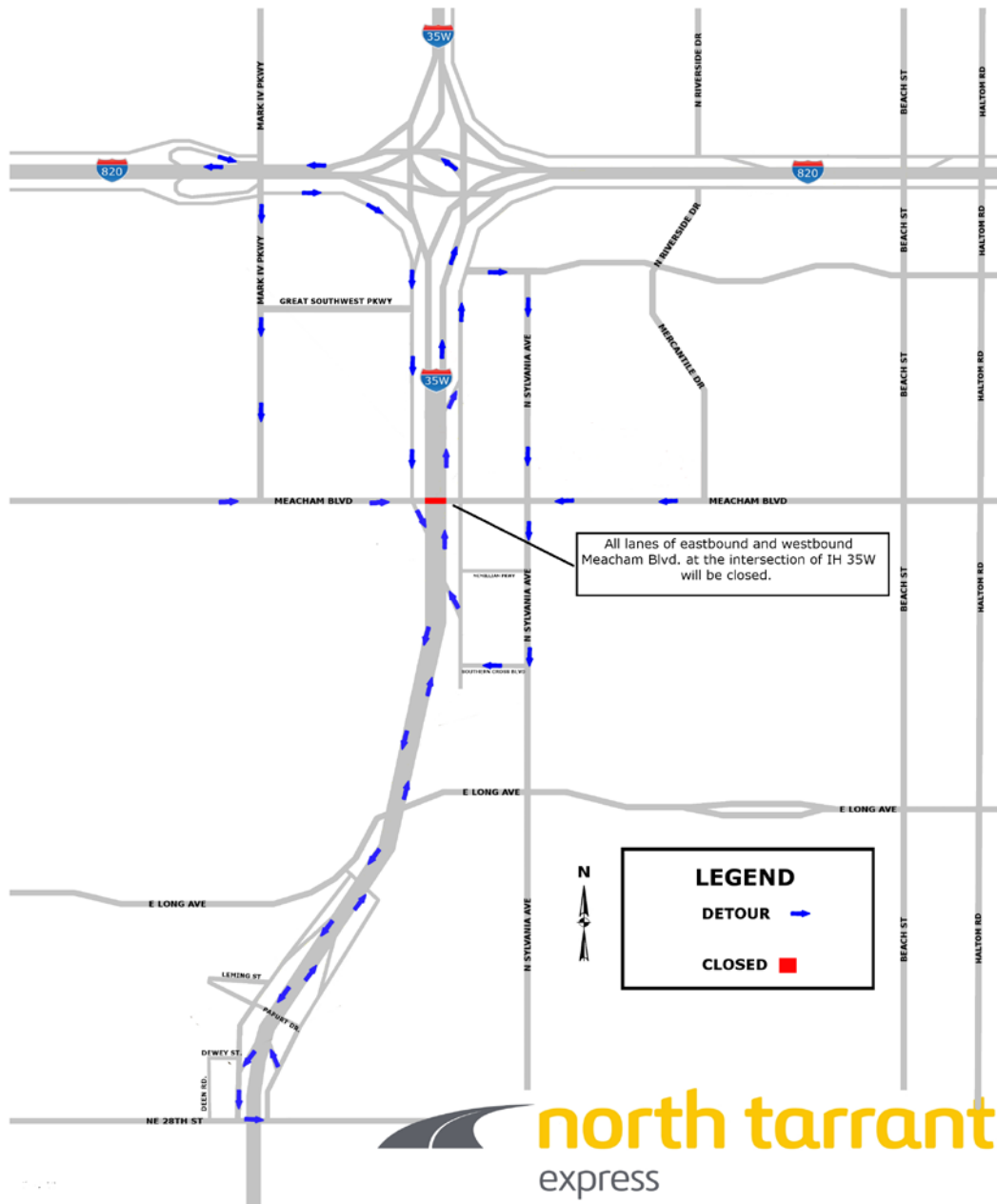
This work is part of the \$1.4 billion North Tarrant Express 35W project. This includes a section that is currently ranked number six on the state's most congested roadway list along 6.5 miles of I-35W from north of I-30 to north of I-820 including the I-35W/I-820 interchange in Fort Worth. The project includes the reconstruction of main lanes and the addition of TExpress managed lanes.

Drivers are encouraged to "Know Before They Go," and visit [www.northtarrantexpress.com](http://www.northtarrantexpress.com) for upcoming closures. To view detour maps, please visit the [Alternate Route Map](#) page of our website. Also, as our lane closures are updated frequently, please visit the [Lane Closures](#) page on our website daily for the most current information. Closures are subject to weather conditions, and construction activities may be postponed if necessary.

###

## CLOSURE OF MEACHAM BLVD. AT I-35W

Friday, April 22 at 9 p.m. thru 5 a.m. Monday, April 25 (at all times)



All lanes of eastbound and westbound Meacham Blvd. at I-35W will be closed.

Eastbound traffic will be redirected to 28th St. and westbound traffic will be redirected to Mark IV Pkwy.