



# 35W Construction Update and Upcoming Traffic Phasing October 25, 2016

# Segment 3A – Progress

I-35W – Downtown to I-820 Interchange

## CONSTRUCTION STATUS

- 56% complete overall
- 165+ companies
- 100 Contracts w/ 75 DBE firms
- 7,100 safety orientations
- 1,300 daily workers
- 3.6 M man hours worked



# Segment 3A – Progress

## I-35W/I-820 Interchange



*I-35W/I-820 interchange looking  
northbound – January 2015*



*I-35W/I-820 interchange looking  
northbound – September 2016*



# Segment 3A – Progress

I-35W at SH 121



*I-35W at SH 121 looking  
northbound – January 2015*



*I-35W at SH 121 looking  
northbound – September 2016*

# Segment 3A – Progress

Spur 280/US 287 at I-35W



*Spur 280/US 287 at I-35W looking eastbound – January 2015*



*Spur 280/US 287 at I-35W looking eastbound – August 2016*



# Upcoming Traffic Switch

- Sat., Oct. 29 – Northbound traffic (yellow) will be shifted to new permanent pavement.
- Tues., Nov. 1 – Southbound traffic (blue) will be shifted into the current northbound lanes. Everything with red X's will be closed.
- Closures due to traffic shift:
  - Southbound on-ramp from Weatherford St. will be closed
  - Southbound on-ramp from Gilvin St. will be closed
  - Southbound 35W off-ramp to westbound Spur 280 (downtown Fort Worth) will be closed



# Segment 3A – Traffic Switch

I-35W – Downtown to I-820 Interchange



The on-ramp to southbound I-35W from Weatherford St. and Gilvin St. will be closed.  
Traffic will be redirected to Riverside Dr.

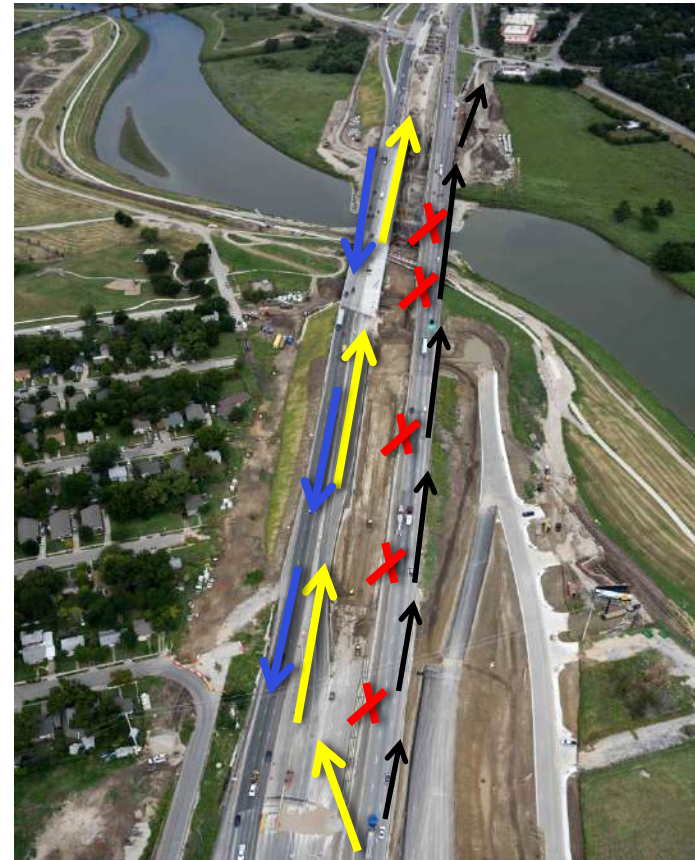
The off-ramp from southbound I-35W to westbound Spur 280 (downtown Fort Worth) will be closed.  
Traffic will be redirected to Belknap St.

# Segment 3A – Upcoming

I-35W – Downtown to I-820 Interchange

## TRAFFIC SWITCH

- Tentatively scheduled for Nov. 18 there will be a traffic shift on northbound I-35W from the Trinity River to 28<sup>th</sup> St.
- Changes due to traffic shift
  - Northbound exit to Northside Dr./Yucca Ave. will be combined with 28<sup>th</sup> St. exit and be located south of the Trinity River.
  - Northbound frontage road traffic coming from downtown will not be able to directly access northbound 35W from Pharr St. on-ramp, this ramp will place traffic in the combined exit ramp. Recommended detour is to take Belknap/121 to Riverside Dr.

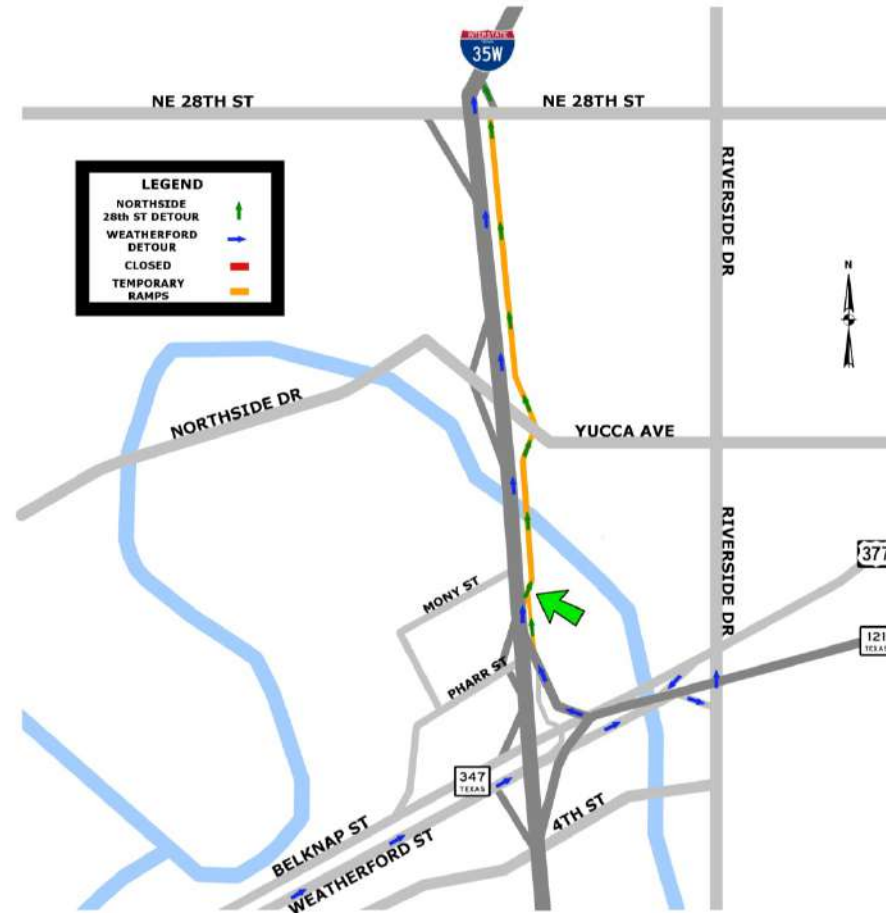


<b>Black</b>	Exit Ramp to Northside Dr. & 28 <sup>th</sup> Street
<b>Red</b>	Freeway Closed, exit only
<b>Yellow</b>	Northbound traffic
<b>Blue</b>	Southbound traffic



# Segment 3A – Traffic Switch

I-35W – Downtown to I-820 Interchange



The off-ramp from northbound I-35W to Northside Dr. and 28th St. will be closed.

Traffic will be redirected to a combined exit for Northside Dr. /Yucca Ave. and 28th St. located south of the Trinity River.

Traffic coming from downtown (Weatherford St.) will not be able to directly access northbound I-35W from the Pharr St. on-ramp.  
The recommended detour is to take Riverside Dr.

Traffic at Northside Dr./Yucca Ave. trying to access northbound I-35W will be redirected to the next entrance at 28th St.

# Segment 3A – Blackout Periods

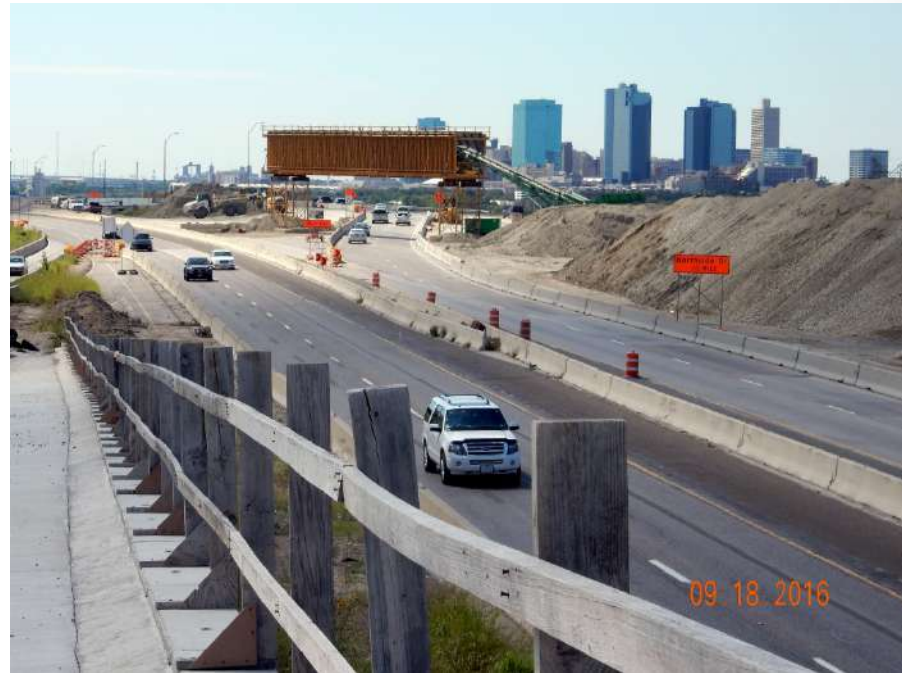
I-35W – Downtown to I-820 Interchange

## NASCAR

- Thursday, November 3<sup>rd</sup> at 3 p.m. to 12 p.m. Monday, November 7<sup>th</sup>

## THANKSGIVING

- Tuesday, November 22<sup>nd</sup> at 12 p.m. to 10 p.m. Monday, November 28<sup>th</sup>



*I-35W at 28<sup>th</sup> St.*