



CONSTRUCTION ALERT
March 31, 2016

CONTACT: Tommy Williamson
(817) 914-0543
twilliamson@ferrovial.us

**EXTENDED CLOSURE OF MEACHAM EXIT FROM
NORTHBOUND I-35W BEGINS APRIL 2**

FORT WORTH, Texas – Beginning **Saturday, April 2**, drivers can expect the following long-term closures:

- The off-ramp from northbound I-35W to Meacham Blvd. will be closed **through June 2017**.
 - Traffic will be redirected to the next off-ramp at Beach Street and will follow the detour signs to Sylvania Ave.
 - The new northbound I-35W exit to Beach Street opened Sunday, March 20.

Additional upcoming short-term closures include:

- Thursday, March 31, 9 p.m. to 5 a.m. Friday, April 1
 - All lanes of westbound I-820 at the I-35W/I-820 interchange will be closed. Traffic will be redirected to Basswood Boulevard.
 - The direct connector from northbound I-35W to westbound I-820 will be closed. Traffic will be redirected to Basswood Boulevard.
 - Rolling full freeway closures on northbound and southbound I-35W from 33rd St. to 28th St.
 - The direct connector from eastbound I-820 to southbound I-35W will be closed. Traffic will be redirected to Haltom Road.
 - The off-ramp from northbound I-35W to Beach St. will be closed. Traffic will be redirected to the previous exit at Meacham Boulevard.
 - The on-ramp to northbound I-35W from Pharr St. will be closed. Traffic will be redirected to Sylvania Avenue.
 - The on-ramp to northbound I-35W from McMillan Pkwy. will be closed. Traffic will be redirected to Mark IV Pkwy.
- Friday, April 1, 9 p.m. to 10 a.m. Saturday, April 2
 - Rolling full freeway closures on northbound and southbound I-35W from 33rd St. to 28th St.

- The on-ramp to northbound I-35W from Pharr St. will be closed. Traffic will be redirected to Sylvania Avenue.
- The direct connector from westbound I-820 to southbound I-35W will be closed. Traffic will be redirected to FM 156.
- The off-ramp from northbound I-35W to Beach St. will be closed. Traffic will be redirected to the previous exit at Meacham Boulevard.
- The direct connector from eastbound I-30 to northbound I-35W will be closed. Traffic will be redirected to Rosedale Street.
- The direct connector from southbound I-35W to westbound I-820 will be closed. Traffic will be redirected to Haltom Rd.
- Saturday, April 2, 9 p.m. to 10 a.m. Sunday, April 3
 - The direct connector from eastbound I-30 to northbound I-35W will be closed. Traffic will be redirected to Rosedale Street.
 - All lanes of westbound I-820 at the I-35W/I-820 interchange will be closed. Traffic will be redirected to Basswood Boulevard.
- Sunday, April 3, 9 p.m. to 5 a.m. Monday, April 4
 - All lanes of northbound I-35W at the I-35W/I-820 interchange will be closed. Traffic will be redirected to Denton Highway 377.
 - The direct connector from northbound I-35W to westbound I-820 will be closed. Traffic will be redirected to Denton Highway 377.

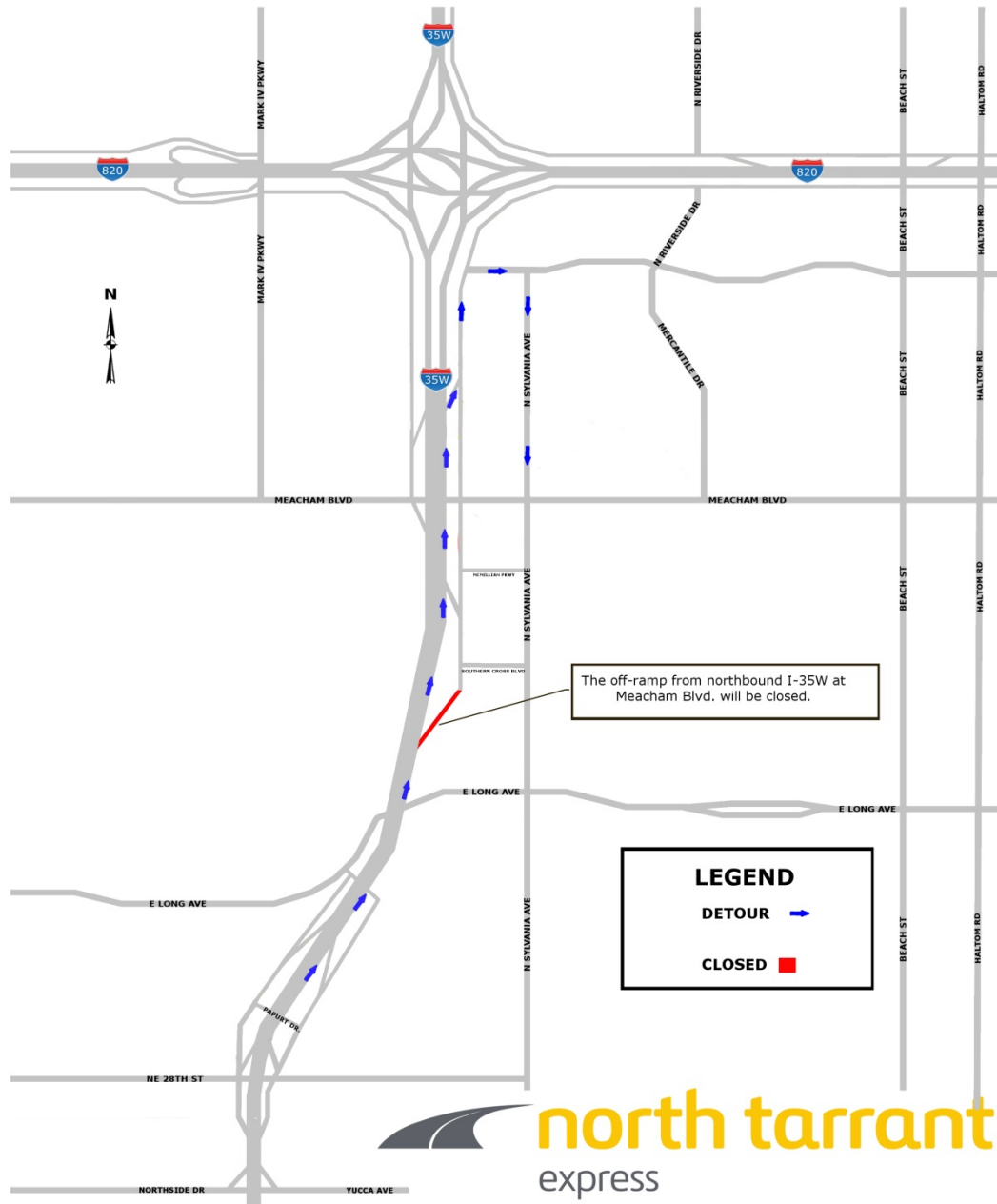
For the latest closure information, follow North Tarrant Express on Twitter [@NTExpress](https://twitter.com/NTExpress) and on Facebook, facebook.com/northtarrantexpress, and sign up for e-alerts at www.northtarrantexpress.com.

This work is part of the \$1.4 billion North Tarrant Express 35W project. This includes a section that is currently ranked number six on the state's most congested roadway list along 6.5 miles of I-35W from north of I-30 to north of I-820 including the I-35W/I-820 interchange in Fort Worth. The project includes the reconstruction of main lanes and the addition of TEXpress managed lanes.

Drivers are encouraged to "Know Before They Go," and visit www.northtarrantexpress.com for upcoming closures. To view detour maps, please visit the [Alternate Route Map](#) page of our website. Also, as our lane closures are updated frequently, please visit the [Lane Closures](#) page on our website daily for the most current information. Closures are subject to weather conditions, and construction activities may be postponed if necessary.

###

LONG TERM CLOSURE OF THE NORTHBOUND OFF-RAMP TO MEACHAM BLVD
Saturday, April 2 through June 2017 (estimated)



The off-ramp from northbound I-35W at Meacham Blvd. will be closed.

Traffic will be redirected to the next exit at Beach St.

WESTBOUND I-820 CLOSURES AT THE I-35W/I-820 INTERCHANGE
Thursday, March 31 from 9 p.m. to 5 a.m. Friday, April 1



All lanes of westbound I-820 at the I-35W/I-820 interchange will be closed.

The direct connector from northbound I-35W to westbound I-820 will be closed.

Traffic will be redirected to Basswood Blvd.

EASTBOUND I-820 TO SOUTHBOUND I-35W CLOSURE

Thursday, March 31 at 9 p.m. to 5 a.m. Friday, April 1



The direct connector from eastbound I-820 to southbound I-35W will be closed.
Traffic will be redirected to Haltom Rd.

CLOSURE OF NORTHBOUND I-35W BEACH ST. EXIT

Thursday, March 31 from 9 p.m. to 5 a.m. Friday, April 1



The off-ramp from northbound I-35W to Beach St. will be closed.

Traffic will be redirected to the previous exit at Meacham Blvd.

CLOSURE OF NORTHBOUND I-35W BEACH ST. EXIT

Friday, April 1 from 9 p.m. to 10 a.m. Saturday, April 2

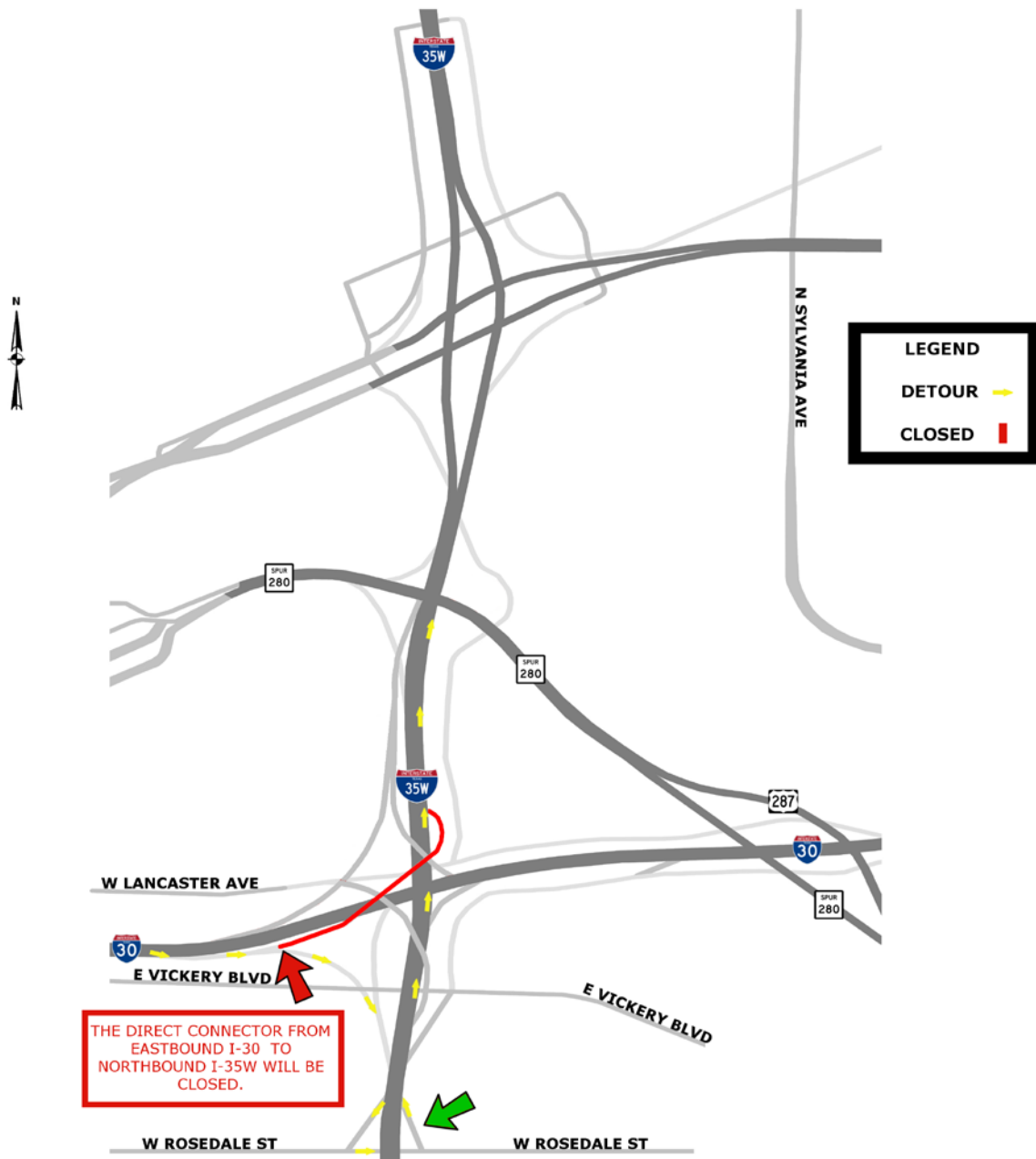


The off-ramp from northbound I-35W to Beach St. will be closed.

Traffic will be redirected to the previous exit at Meacham Blvd.

CLOSURE OF THE DIRECT CONNECTOR FROM EASTBOUND I-30 TO NORTHBOUND I-35W

Friday, April 1 and Saturday, April 2 from 9 p.m. to 10 a.m. nightly



The direct connector from eastbound I-30 to northbound I-35W will be closed.

Traffic will be redirected to Rosedale St.

CLOSURES AT THE I-35W/I-820 INTERCHANGE

Friday, April 1 from 9 p.m. to 10 a.m. Saturday, April 2



The direct connector from southbound I-35W to westbound I-820 will be closed.
Traffic will be redirected to Haltom Rd.

The direct connector from westbound I-820 to southbound I-35w will be closed.
Traffic will be redirected to FM 156.

WESTBOUND I-820 CLOSURE AT THE I-35W/I-820 INTERCHANGE
Saturday, April 2 from 9 p.m. to 10 a.m. Sunday, April 3

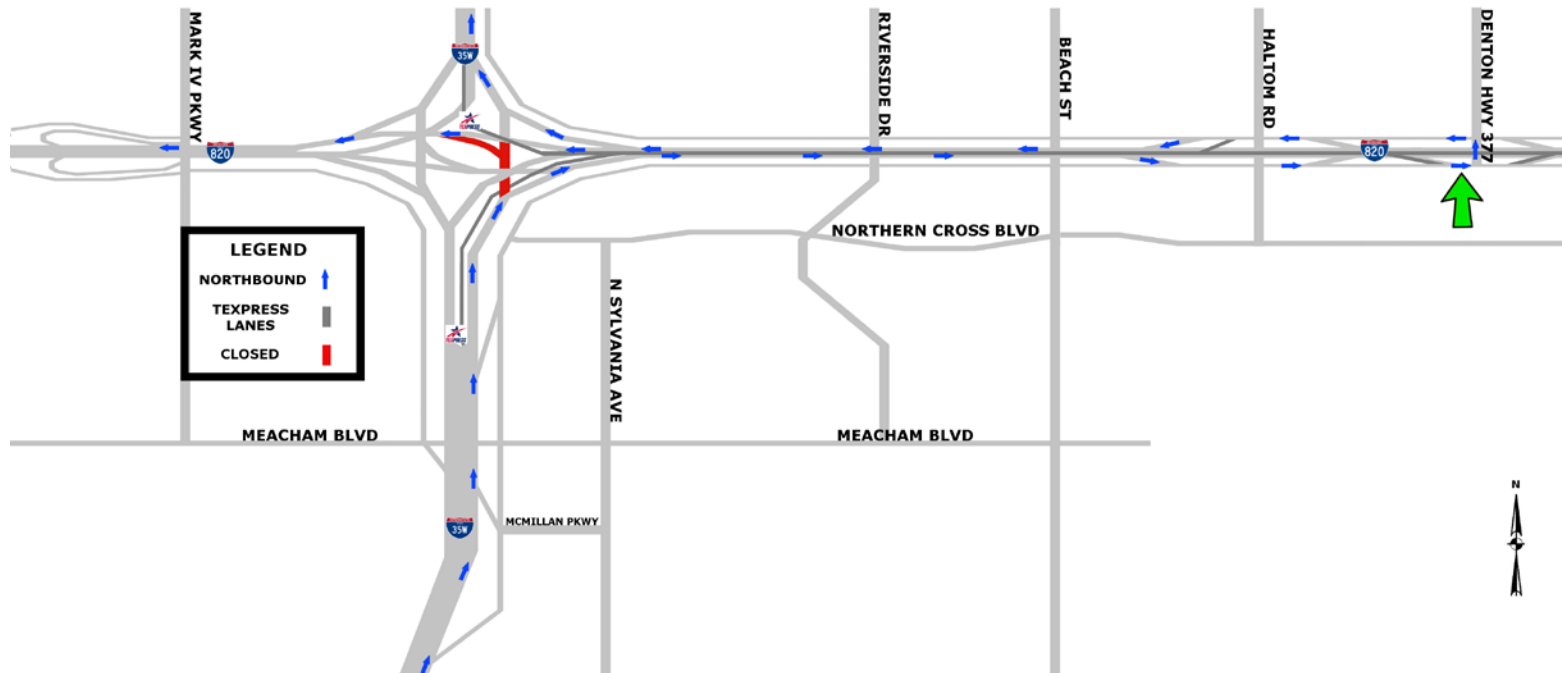


All lanes of westbound I-820 at the I-35W/I-820 interchange will be closed.

Traffic will be redirected to Basswood Blvd.

CLOSURES ON NORTHBOUND I-35W AT I-820

Sunday, April 3 from 9 p.m. to 5 a.m. Monday, April 4



All lanes of northbound I-35W at the I-35W/I-820 interchange will be closed.

The direct connector from northbound I-35W to westbound I-820 will be closed.
Traffic will be redirected to Denton Hwy. 377.